

MEETINGS MADE EASY

ROME

EXPERIENCE
MEETINGS

HOTELS DESIGNED TO SAY YES!
radissonblu.com/meetings

WELCOME

The Radisson Blu es. Hotel was built in 2002 in the heart of Rome and it is the first hotel to feature Italian design.

It is a sign of modern innovation in the heart of late 19th century Umbertine Rome and remember
a modern cruise ship from where guests can start their trip to the Eternal City.

When construction of the hotel began, remains of an Ancient Roman road were unearthed so architects
Jeremy King and Riccardo Roselli altered the original design to include the archaeological finding within the hotel.

This is the reason why we can define the hotel as a place in perfect harmony with ancient history
and a contemporary concept of hospitality and accommodation.

The Hotel has a strategic location adjacent to Roma Termini Central railway station and within easy access
to the express train connecting to Fiumicino airport, which at 32 km distance is only a 30 minute train ride away,
and walking distance to two metro stations.

EXPERIENCE MEETINGS

Experience Meetings by Radisson Blu is a concept that ensures successful meetings by harmonizing the tangibles:
breakout rooms, connectivity and food with the intangibles such as: service, satisfaction and sustainability.

An integral part of Experience Meetings is **Brain Food** is perfect meeting food that improves efficiency,
ability to concentrate and mental speed; while lowering stress levels.

Designed to elevate your efficiency and creativity, **Brain Box** touches upon all the senses with walls you can write on,
with colors that spark your brain and flexible furniture that give you the space to think.

And, Experience Meetings makes it easy for you to go online when you meet with **free WiFi** for all meeting delegates.

Plus each time you book a meeting or event at the Radisson Blu es. Hotel, you can earn Gold points®
within our Club CarlsonSM for Planners programme.

Sign up now at clubcarlson.com and you can start earning points for Award Nights, upgrades and much more



MEETINGS & EVENTS

The Radisson Blu es. Hotel offers the biggest conference venue in Rome city centre and state-of-the-art communication
technology in 12 meeting rooms.

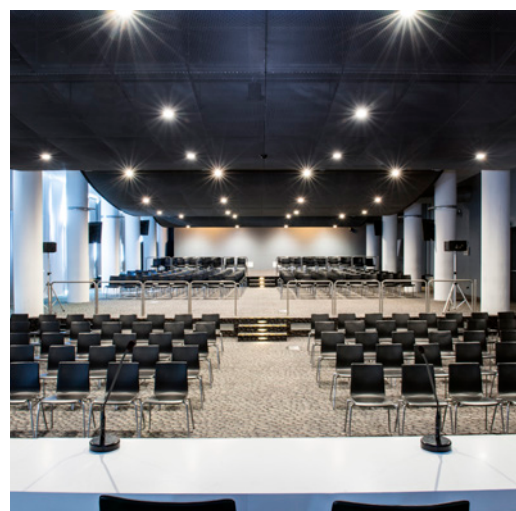
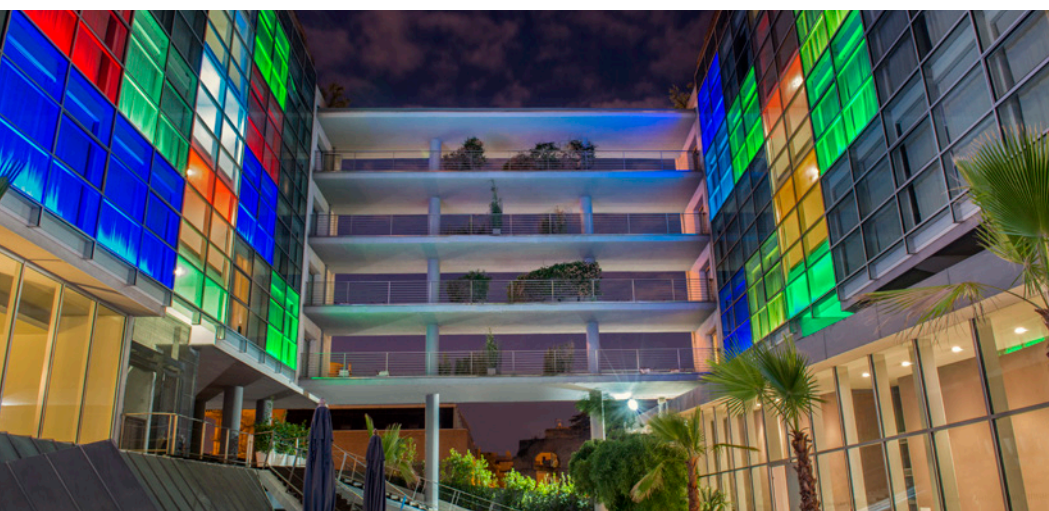
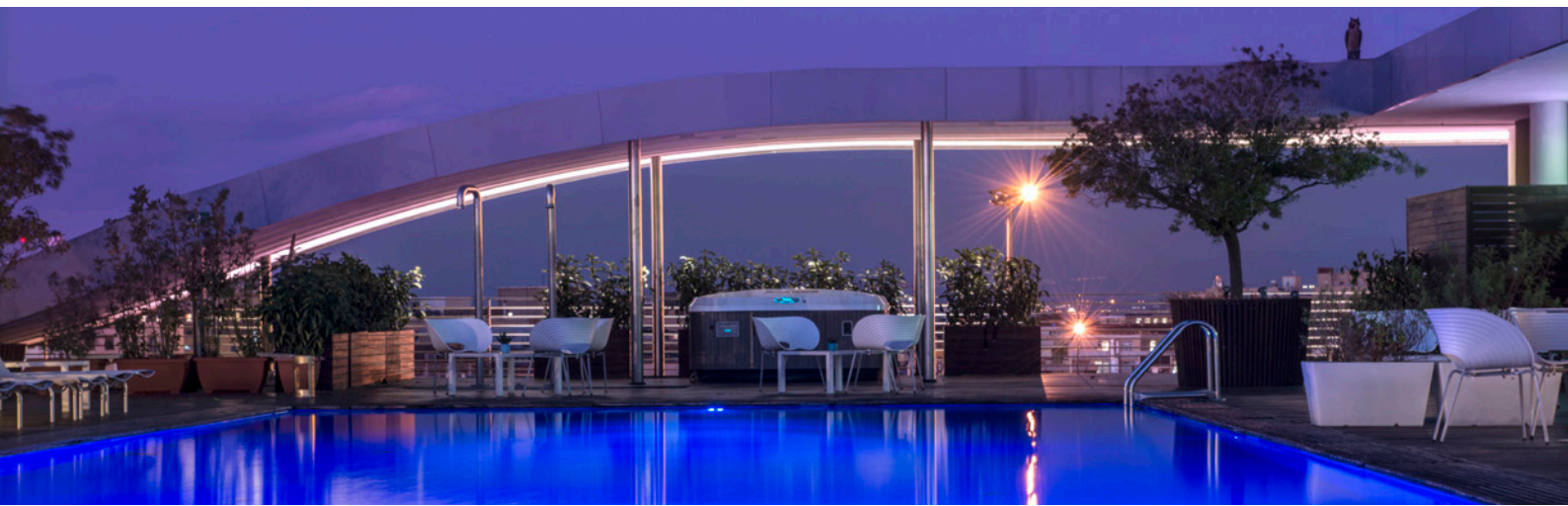
On the ground floor, the CONFERENCE CENTRE Extra Large is modular, can accommodate as many as 500 guests
and can be divided to become from one to three separate rooms: Large, Medium, Small.

The ES. LIBRIS offers an oasis of calm furnished with white couches and designer bookcases with ambient lighting,
quiet music and books to leaf through.

The seventh floor houses the unique CONFERENCE SETTE meeting room. Enclosed in wood and glass, it offers guests
an exclusive view of the Castelli Romani. The private terrace, for participants only, is the perfect place to take a break
and enjoy a cup of coffee while looking out onto the Eternal City. It can accommodate up to 70 people
and lends itself to various types of events.

On various floors of the Radisson Blu es. Hotel, innovative Junior Suites can be transformed into small MEETING SUITES
with a boardroom table. They can accommodate up to 20 people.

The rooms are bathed in natural daylight and feature free upgraded wi-fi.



RESTAURANTS & BAR

Minimalist design, enclosed behind a glass wall that leaves guests at the mercy of Rome's variable weather, tricks of light, exclusive materials, a stunning view of Rome.

This is the 100-seater Sette Restaurant. A place for culinary adventures and intense sensory experiences located on the seventh floor of the hotel

Next to it, the 170-seater bar & restaurant Zest is a place where you can have a snack, a drink, or a quick, simple meal even on the terrace.

An exhilarating or relaxing experience depending on the time and light of day.

For larger in-door the Sette and the Zest can be joined and become one unique 270-seater restaurant

ROOMS & SUITES

The Radisson Blu es. Hotel offers 232 guestrooms including 26 suites and 1 Presidential suite.

The styles are distinctive, the colors, materials and designs are distinctive, and the relationship between the room and the bathroom is distinctive as well.

Last but not least, a distinctive concept in hotel guestroom design that no longer expresses "a home away from home" but rather a new, unique space where guests find themselves in a comfortable and functional environment where nothing is taken for granted and where even light plays an important role.

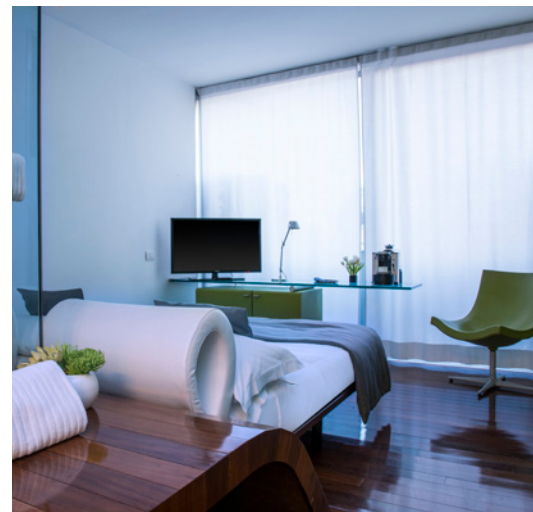
All guest rooms are equipped with flat screen, satellite television, kettle with tea and coffee provisions, in-room safe

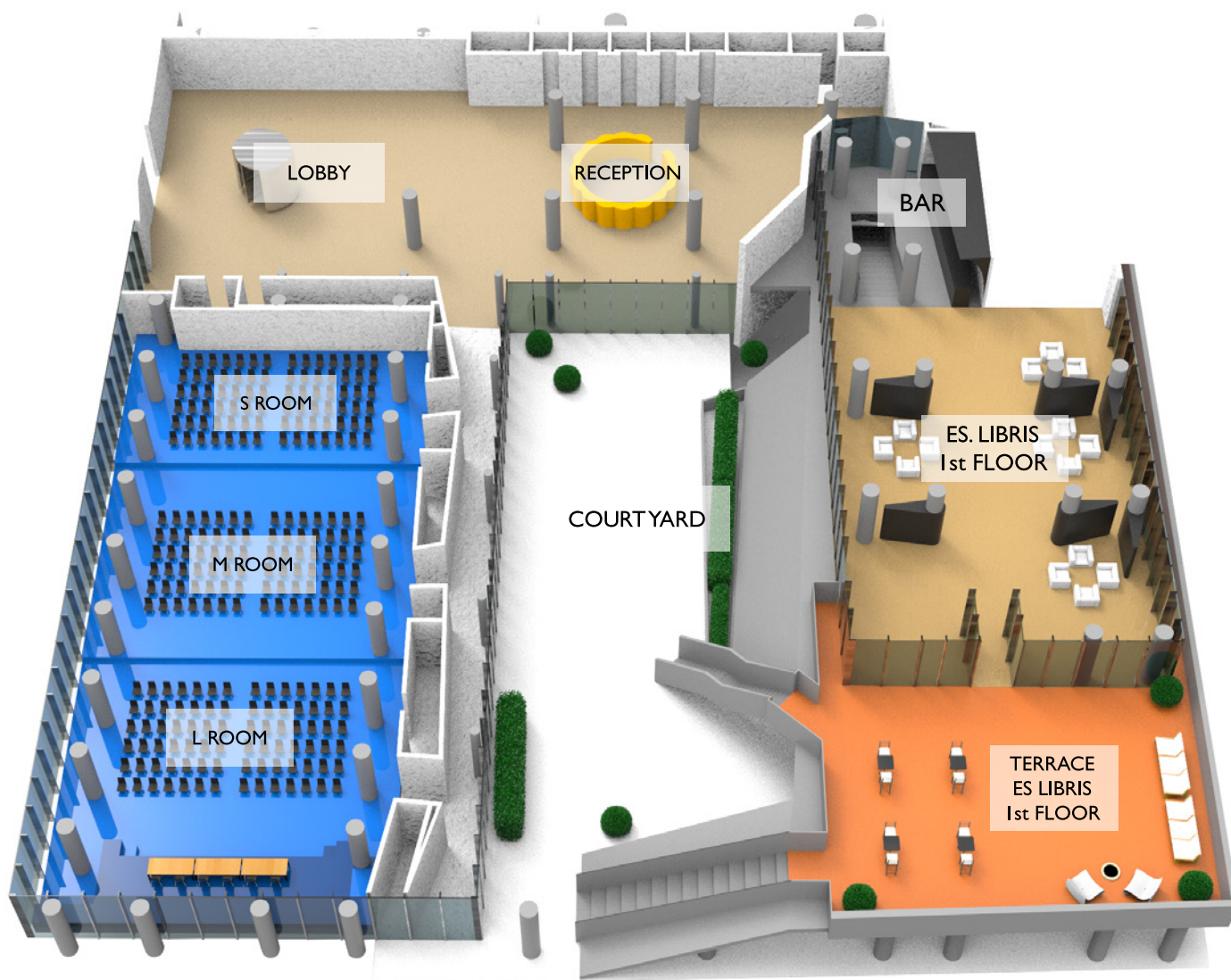
FITNESS & RELAXTION

Finding a Spa on the top floor of a hotel is truly unique.

Our Wellness Center features a glass wall that overlooks Termini train station but because it is soundproofed, you can watch the comings and goings of trains in complete peace and quiet.

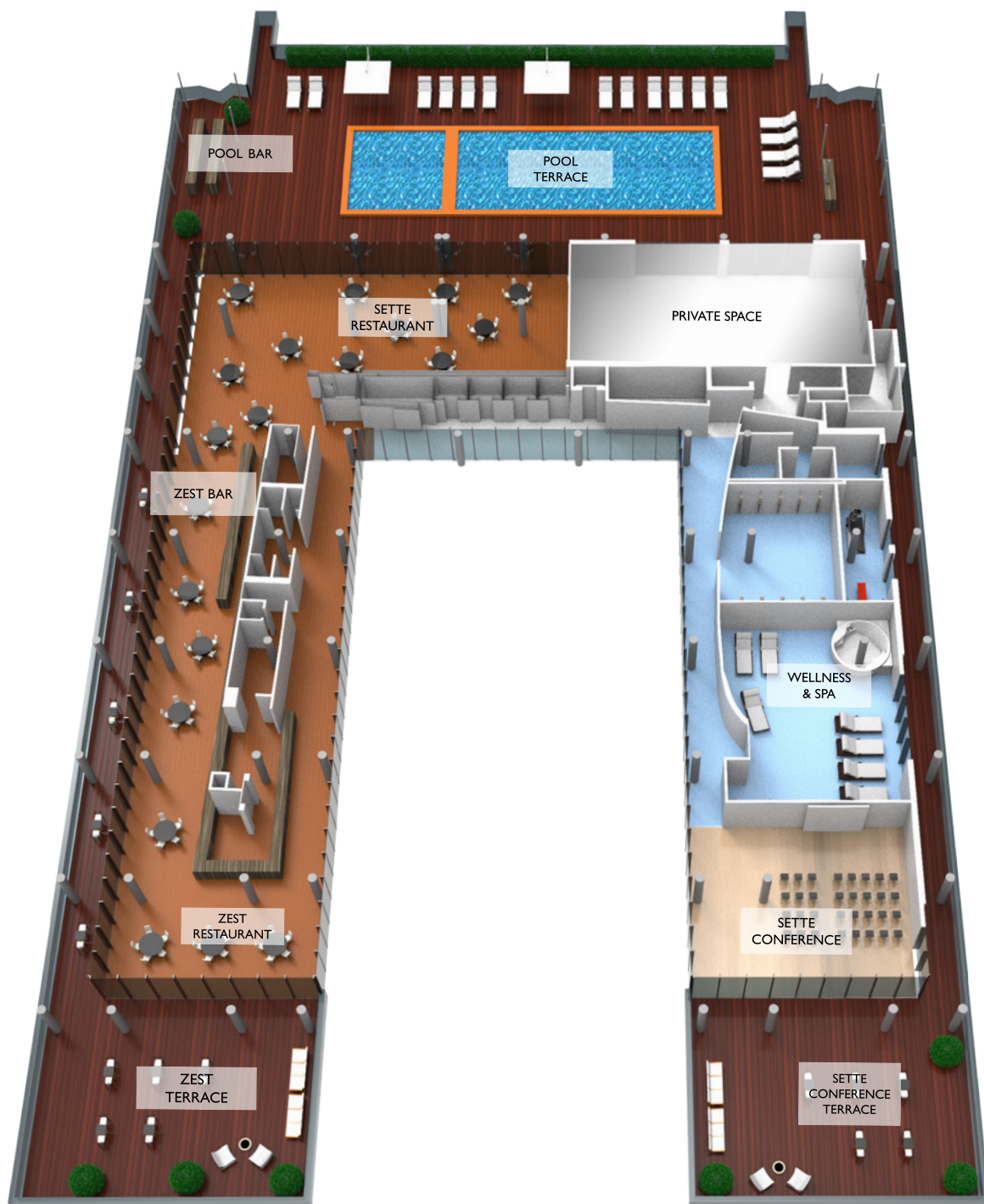
A Finnish sauna, hot tub, massages, body and beauty treatments and a fitness room are just a few of the services offered at our Spa.





MEETING ROOM CAPACITY

MEETING ROOM	Boardroom	Classroom	U - Shape	Theatre	Cabaret	Floor to ceiling height	Door height	SQM	SQ FT
S	30	42	24	64	28	2,6 m.	2,3 m.	114	1227
M	36	78	33	160	56	3 m.	2,3 m.	175	1883
L	36	84	33	160	56	4 m.	2,3 m.	217	2335
XL	–	234	–	500	160	–	2,3 m.	497	5349
L+M	–	180	–	350	120	–	–	392	4219
M+S	–	138	–	230	90	–	–	289	3110
ES. LIBRIS	–	50	21	80	28	3 m.	–	300	3229
MEETING SUITE	14	–	–	20	–	2,66 m.	2,1 m.	42	452
CONFERENCE SETTE	24	45	27	60	28	3 m.	1,90 m.	121	1302



SEVENTH FLOOR CAPACITY

	Placé	Buffet	Cocktail
Zest	170	150	250
Sette	130	100	200
Zest + Sette	300	270	500
Pool	160	160	300
Sette + Pool	270	250	480



The Radisson Blu es. Hotel, Rome sits in the very heart of the city's center, only 10 minutes away from Roma Termini Railway Station.

This ensures you easy access to the entire Italian capital through the Rome Metro, so that you may fill your day with history, shopping, sports and dining.

ARRIVAL

BY AIR

Leonardo Da Vinci Fiumicino Airport is located 32 km west of the hotel
When arriving by plane you can take the Leonardo Express non-stop train, departing every 15 or 30 minutes – depending on the time of day, from the airport and into the city center.

The journey takes a mere 32 minutes, and all trains are equipped with dedicated seating and restrooms for passengers with reduced mobility.

For updated ticket prices and departure times, please see the Leonardo Express website.

When you arrive at Rome Termini Station, follow the indication along the rails for platform 25 to 27.

In front of it, head down the stairs on the left, cross the street and you will arrive at the hotel.

BY TRAIN

Rome Termini Station, which is the central station for Rome and the base for all train transport, connects Rome with all of Italy and Europe.

When you arrive at Rome Termini Station, follow the indication along the rails for platform 25 to 27.

In front of it, head down the stairs on the left, cross the street and you will arrive at the hotel.

BY METRO

Metro lines A and B go around rather than through the historic city.

The Vittorio Emanuele metro station is located two blocks away, which is serviced by metro line A.

Termini metro station is a 10-minute walk away, and is serviced by both metro lines A and B.

RADISSON BLU ES. HOTEL, ROME

Via Filippo Turati, 171 - 00185 Rome, Italy

Ph +39 06 444841

mice.rome@radissonblu.com

www.radissonblu.com/eshotel-rome